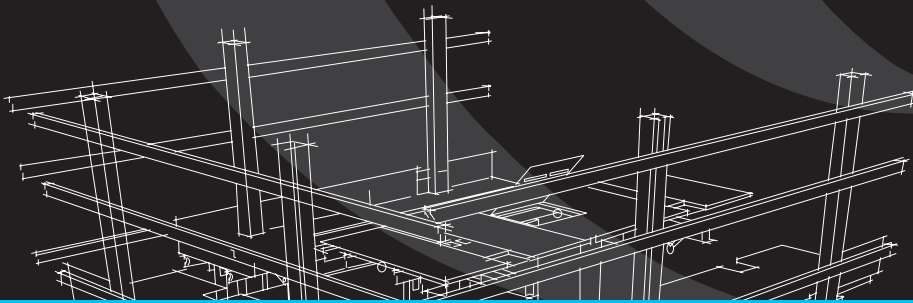


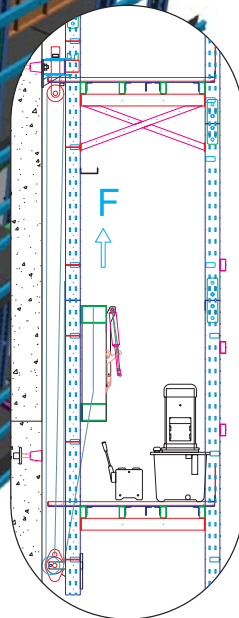
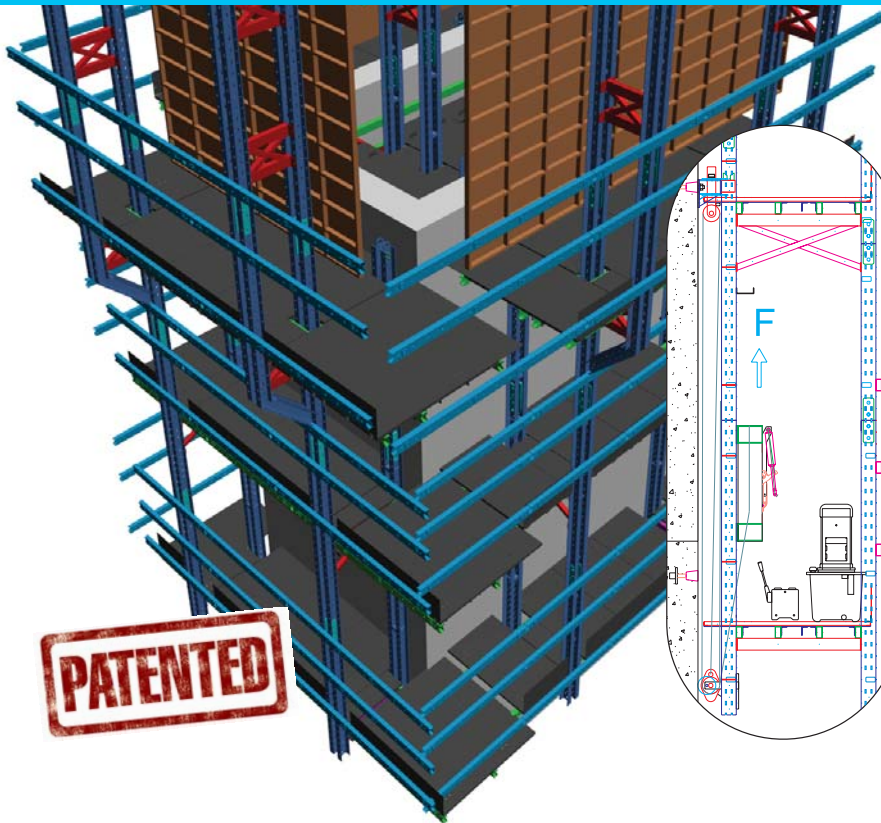
HYDRAULIC SELF CLIMBING

Cost-Effective Hydraulic Climbing



"COST EFFECTIVE CLIMBING SOLUTION SAVES TIME AND MANPOWER"

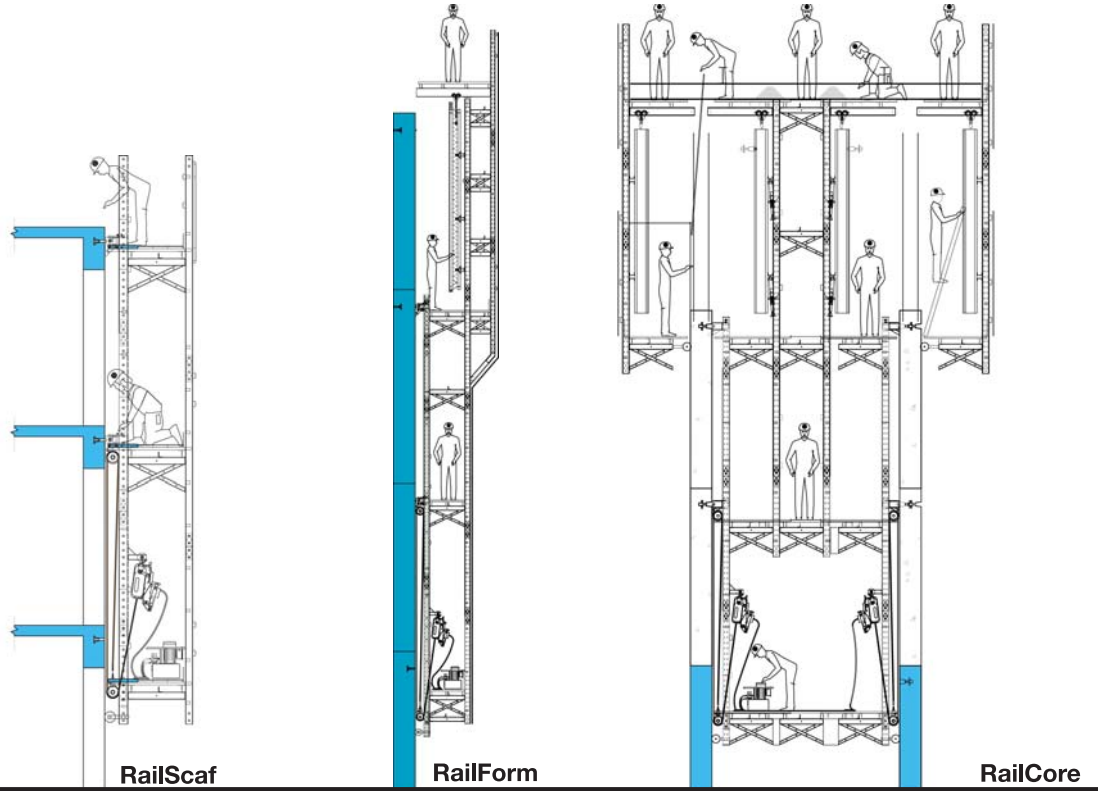
"HEAVYLOADS AND LARGE UNITS CAN BE LIFTED IN ONE SINGLE OPERATION"



Hydraulic self climbing solution applicable to all rail-climbing products includes RailScaf, RailForm, RailCore & RailScreen. Thus enable you to overcome circumstances where crane is not available and not forgo unique benefits of Rail-Climbing concept.

Self climbing can be done simultaneously on a standard 2 or 4 simultaneous lifting points, controlled remotely or manually gives you the flexibility, less manpower and time saving.

Application
on...



Upper Gear Set



Lower Gear Set

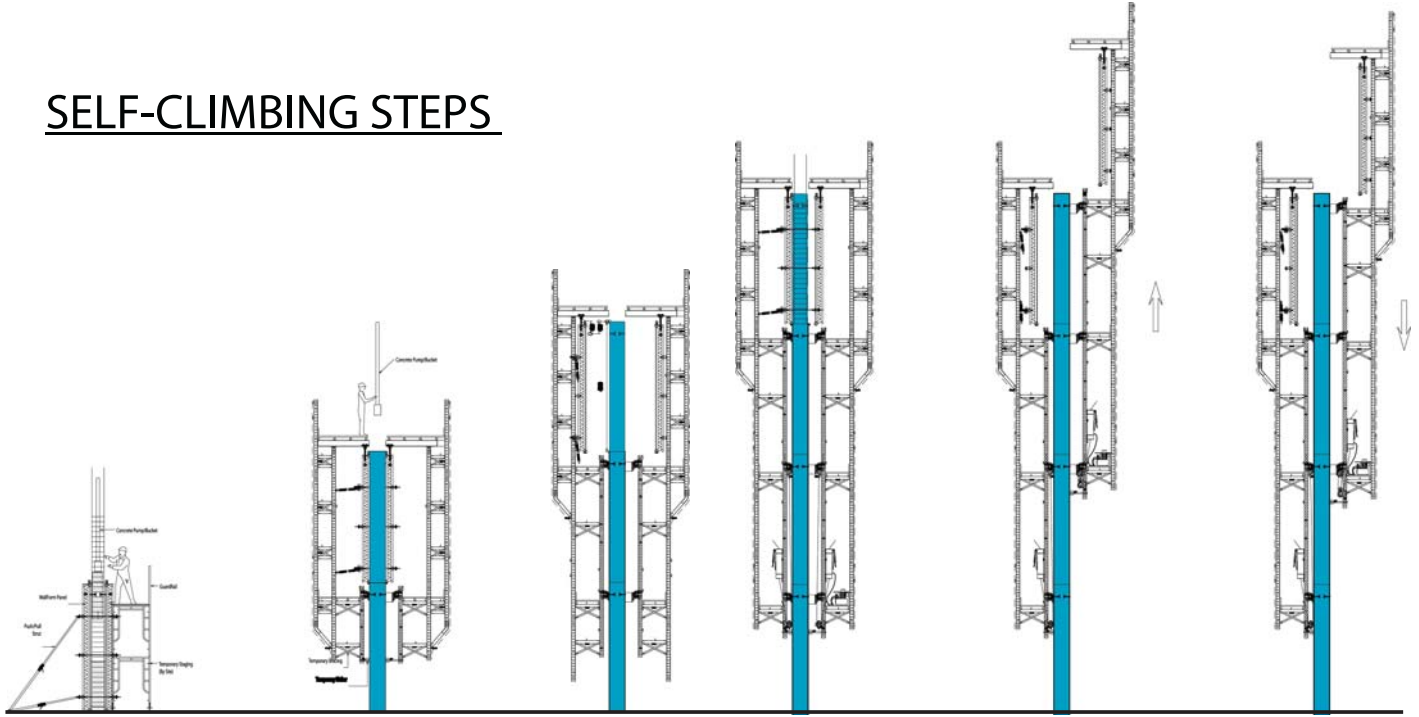


Hydraulic Puller



Portable Hydraulic Powerpack

SELF-CLIMBING STEPS



STEP 1

1. Cast 150mm height kicker
2. Install rebar-cage .
3. Close Formwork System
4. Cast concrete wall.
5. After curing, open formwork system

STEP 3

- 1 Install Rail Brackets and 2nd Stage climbing system.
- 2 Proceed with Re-Bar Installation.
- 3 Proceed to cast concrete wall.
4. After curing, open formwork and precede to next climbing.

STEP 5

1. Install climbing equipments and climb up by hydraulic climbing.
2. Climbing up the Unit above the desired level .

STEP 2

1. Install Railbrackets & 1st Stage climbing system
2. Install couplers, beam bar & starter bar
3. Close formwork system
4. Cast concrete wall.
5. After curing, open formwork system

STEP 4

- 1 Install Rail Brackets and last Stage climbing system,
- 2 Proceed with Re-Bar Installation.
- 3 Proceed to cast concrete wall.
4. After curing, open formwork.

STEP 6

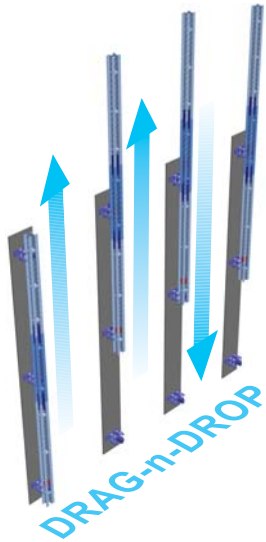
Lower down the Unit to desired level.

Date table using Hydraulic Pullers & Sheaving Techniques using 2 type of hydraulic pumps.

Gearing Ratios	Puller 16H (1600Kgs capacity)			Puller 32H (3200Kgs capacity)		
	Geared Lifting Force / Point (Kgs)	2-points climbing speeds (m/min)	4-points climbing speeds (m/min)	Geared Lifting Force / Point (Kgs)	2-points climbing speeds (m/min)	4-points climbing speeds (m/min)
1:1	1600	1.00	0.50	3200	1.00	0.50
1:2	3200	0.50	0.250	6400	0.50	0.250
1:3	4800	0.33	0.167	9600	0.33	0.167
1:4	6400	0.50	0.25			
1:5	8000	0.33	0.167			

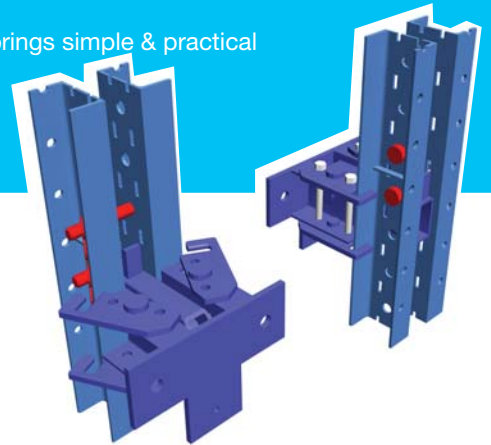
Ehub was established in 2002 with an aim to innovate, manufacture & offer the best solutions in climbing scaffold and formwork systems.

Our efficient and patented rail climbing technology brings simple & practical solutions that will meet your needs while satisfying all the stringent safety regulations set by the International Standards.



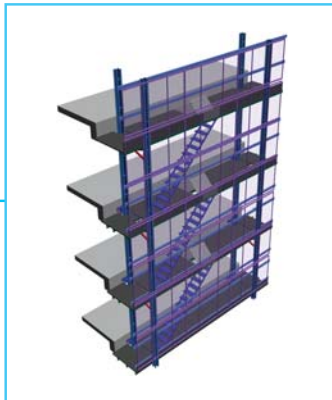
Rail Climbing 'drag-n-drop' Benefits

- Extremely Fast Resetting Times
- Modular Components
- Flexible Unit Configurations
- Built-In-Safety
- Crane Dependent or Crane In-Dependent

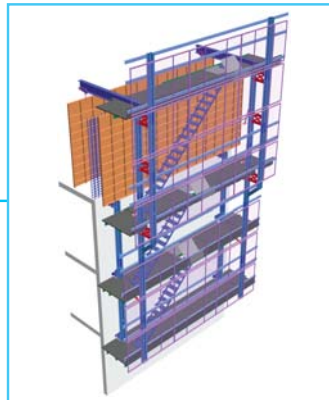


With the patented 'drag-n-drop' concept, all our products incorporates the rail climbing benefits as follows:-

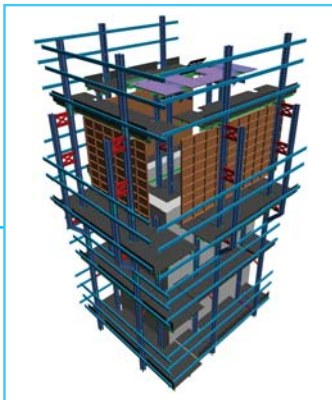
Revolutionary Access Scaffold System



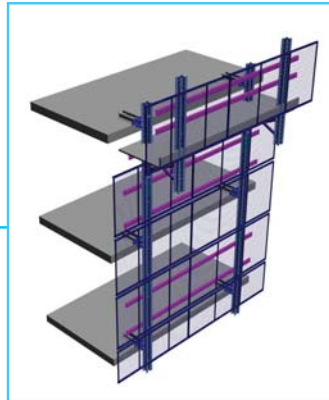
Efficient Forming & Access System



Competent Corewall Forming System



Safe Protection Screen System



The photos here show construction sites the operation of which is not our responsibility. As a consequence, we cannot influence whether instructions for erection & use are properly observed or whether safety regulations are complied with, especially as these are momentary shots that do not represent final & definite state of products use.



Representative:

For any enquiries please do not hesitate to contact us :-

EHUB PTE LTD
15 Neythal Road
Singapore 628580

Tel: (65) 6265 3177
Fax: (65) 6515 0084
Email: info@ehub.com.sg
Website: www.ehub.com.sg